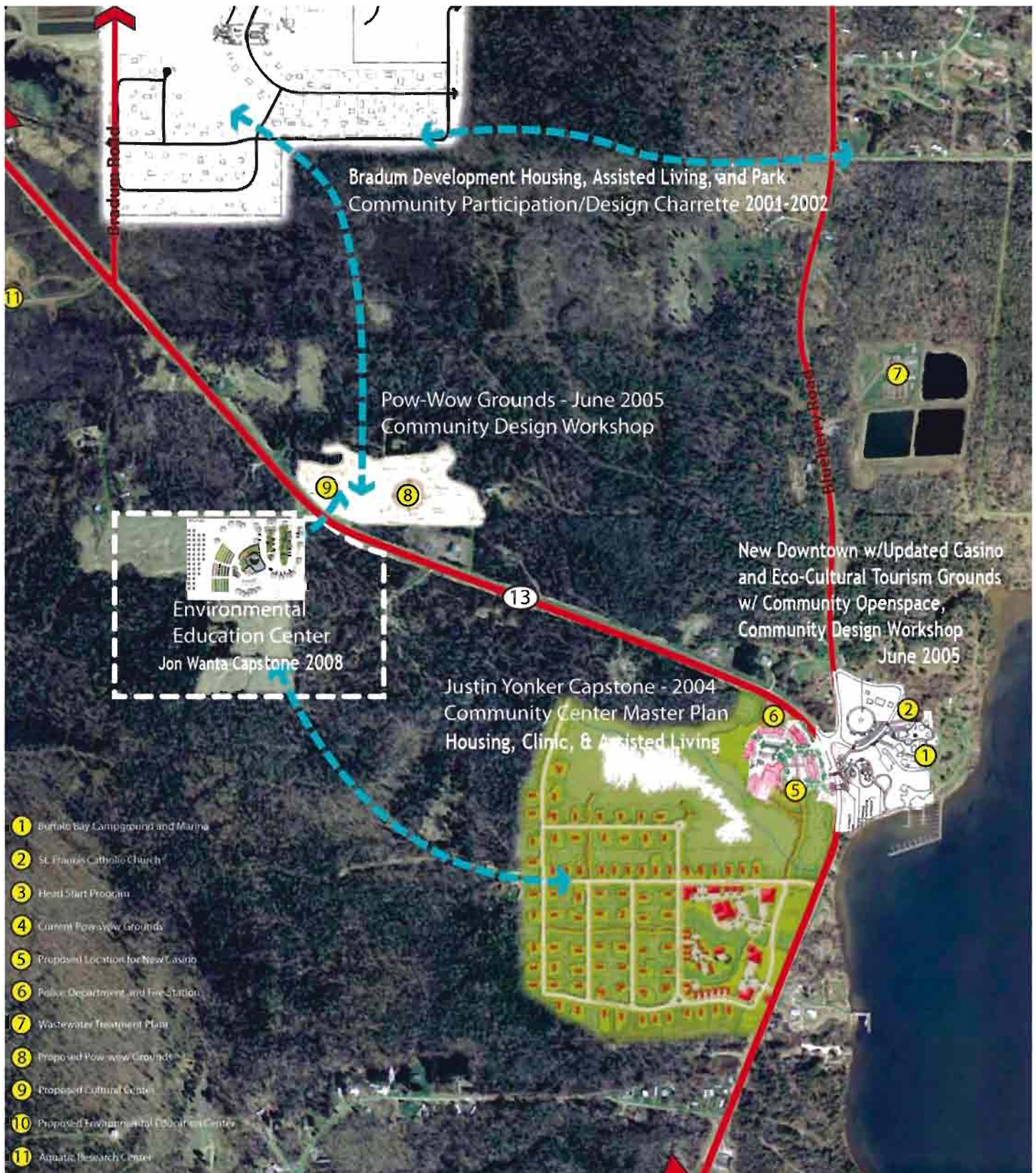
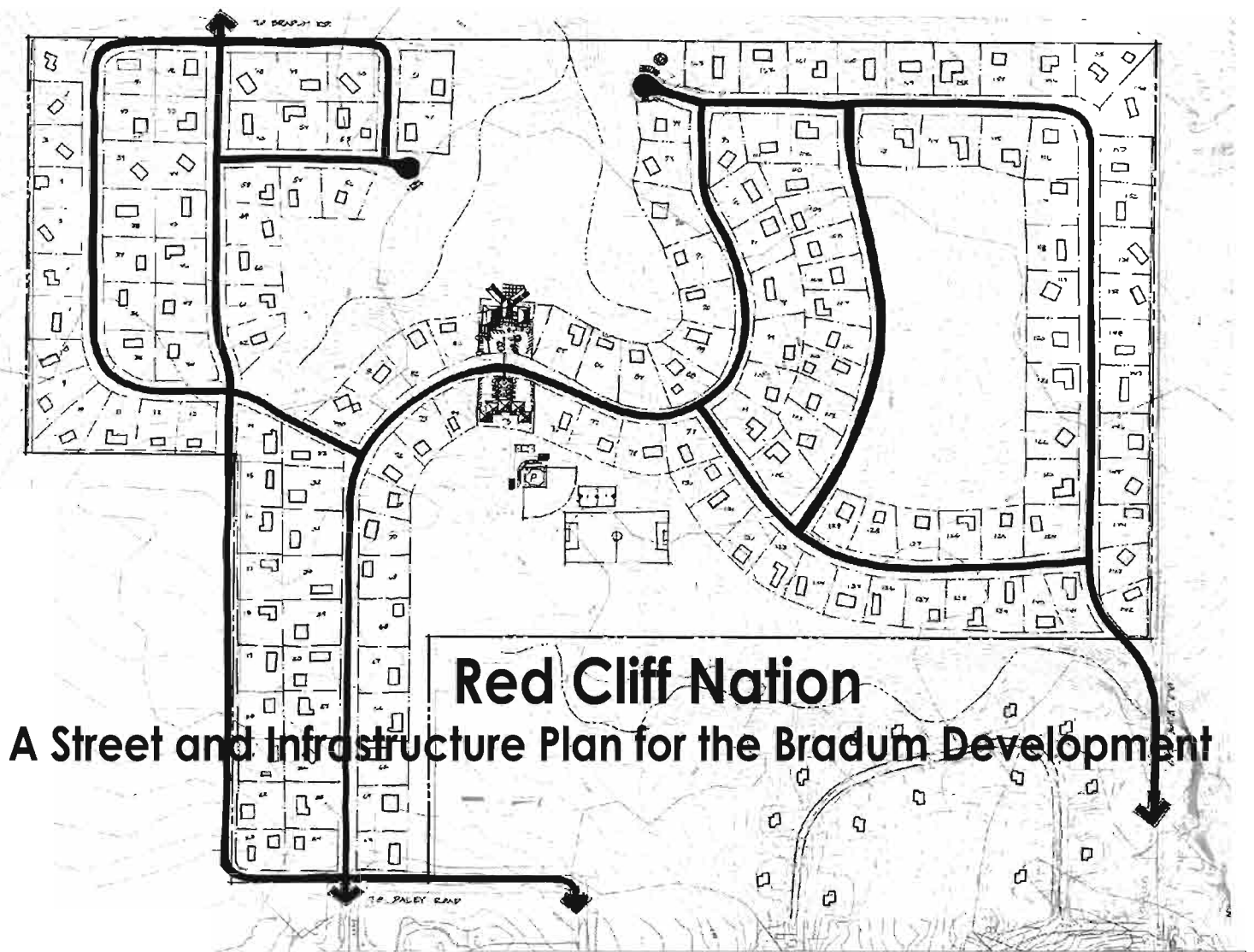


Green Community Partnerships with the Red Cliff Nation 2001-2008





Photos from a participatory workshop with residents of the Red Cliff Nation:
 Right: Residents discuss “pros & cons” of four concept plans.
 Left: Residents study a cardboard model of the 200 acre site.





Approximate Site for
New Pow-Wow Grounds

Community Design "Open Workshop"

June 6th and 7th, 2005



Approximate Site for
New Downtown Red Cliff
Part 1 and Part 2



Contents:

"Downtown Red Cliff"

Open Workshop Notes and Site Map
Ideas for a Downtown Red Cliff Part 1
Ideas for a Downtown Red Cliff Part 2
Example of Stormwater Design

New Pow-Wow Grounds

Open Workshop Notes and Site Map
Idea #1
Idea #2
Idea #3

Ideas for New Drum Arbor

Idea #1
Idea #2
Idea #3

Copy of "Feedback Board"

DOWNTOWN RED CLIFF

"NO LIGHTHOUSES"
CULTURALLY COMMUNITY/RELEVANT

EROSION IN
PARKING LOT

LIGHTING

TIE INTO IMPROVEMENT
THE CRESTO

LOCAL TREES
LANDSCAPE



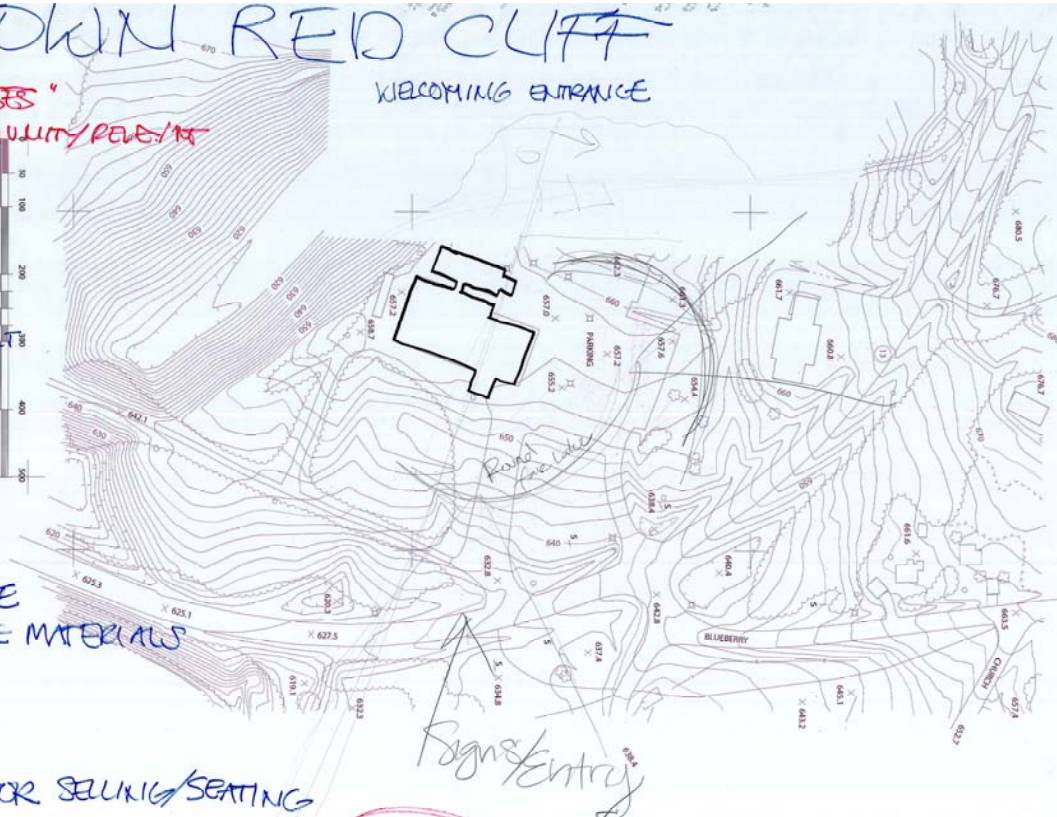
WELCOMING ENTRANCE

MATERIALS:

MINIMUM MAINTENANCE
LOCALLY APPROPRIATE MATERIALS

1ST FLOOR RETAIL
2ND FLOOR OFFICE?

SIDEWALKS/OUTDOOR SEATING/SEATING



PHASE IN

5+ acres

RESIDENTS

TOURISTS

ARTS & CRAFTS

BEAUTY SALON

Laundry

5 & 10

POST OFFICE

HARDWARE STORE

PERFORMING ARTS?

SPECIALITY FOOD SHOPS

LIVE WORK

10 spaces?

PARKING: CASINO
PROMOTIONS
WINTER ICE FISHING
RV'S

INCUBATORS:

CONFERENCE ROOM

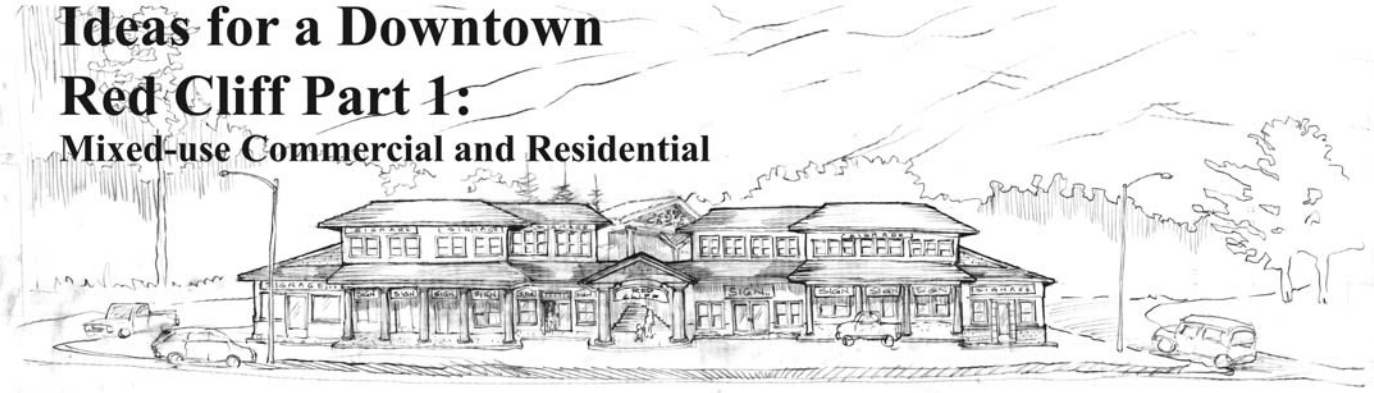
INTERNET

NICE BROWN COLOR
NOT JUST SQUARE-FLOW
FUNCTIONALITY
ART WORK
MURAL
ROUND INSIDE

DRAFT DRAFT DRAFT DRAFT

Workshop Notes and Site Map Downtown Red Cliff Project

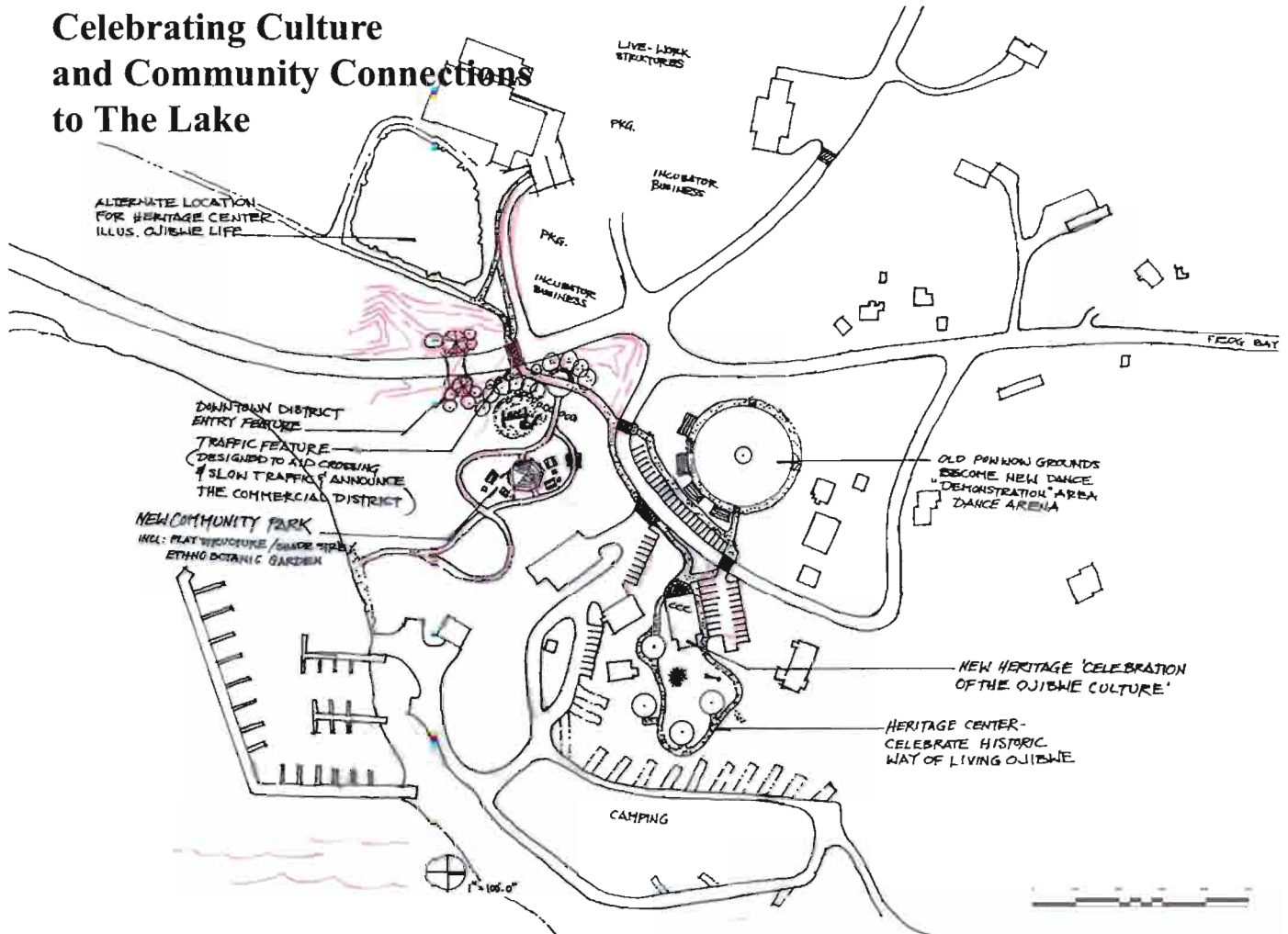
Ideas for a Downtown Red Cliff Part 1: Mixed-use Commercial and Residential



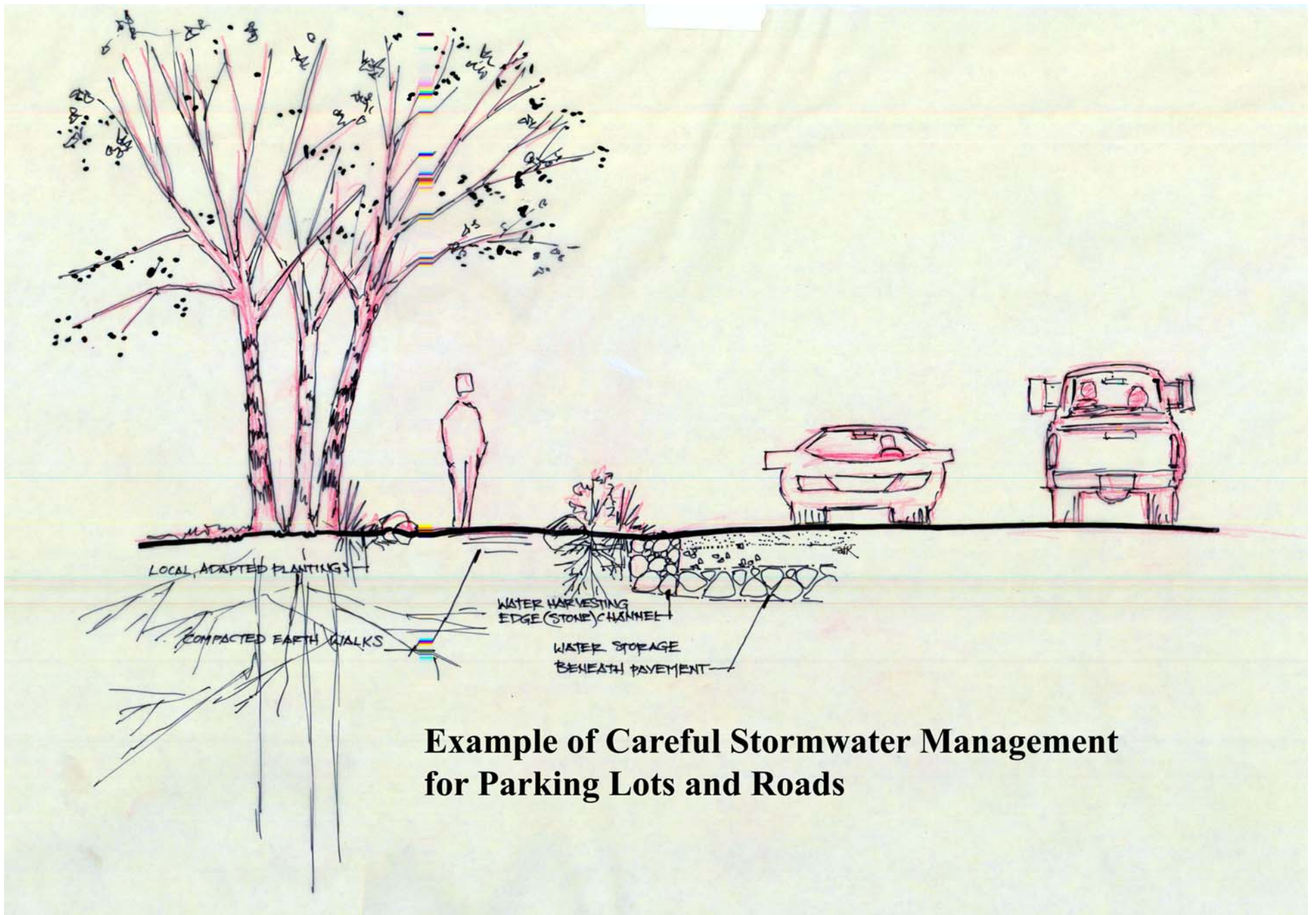
PHASE 3

PHASE 2

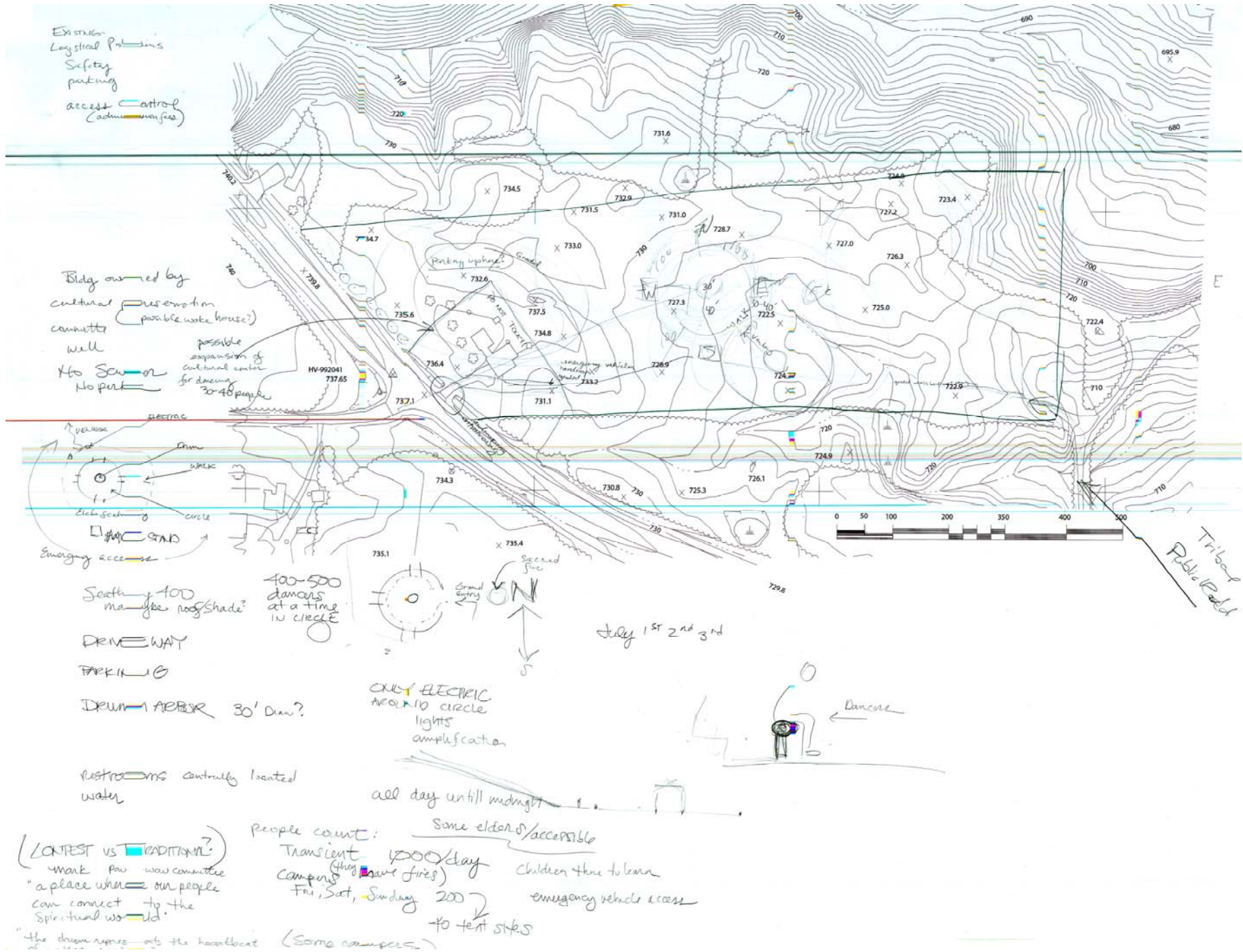
Ideas for a Downtown Red Cliff Part 2: Celebrating Culture and Community Connections to The Lake



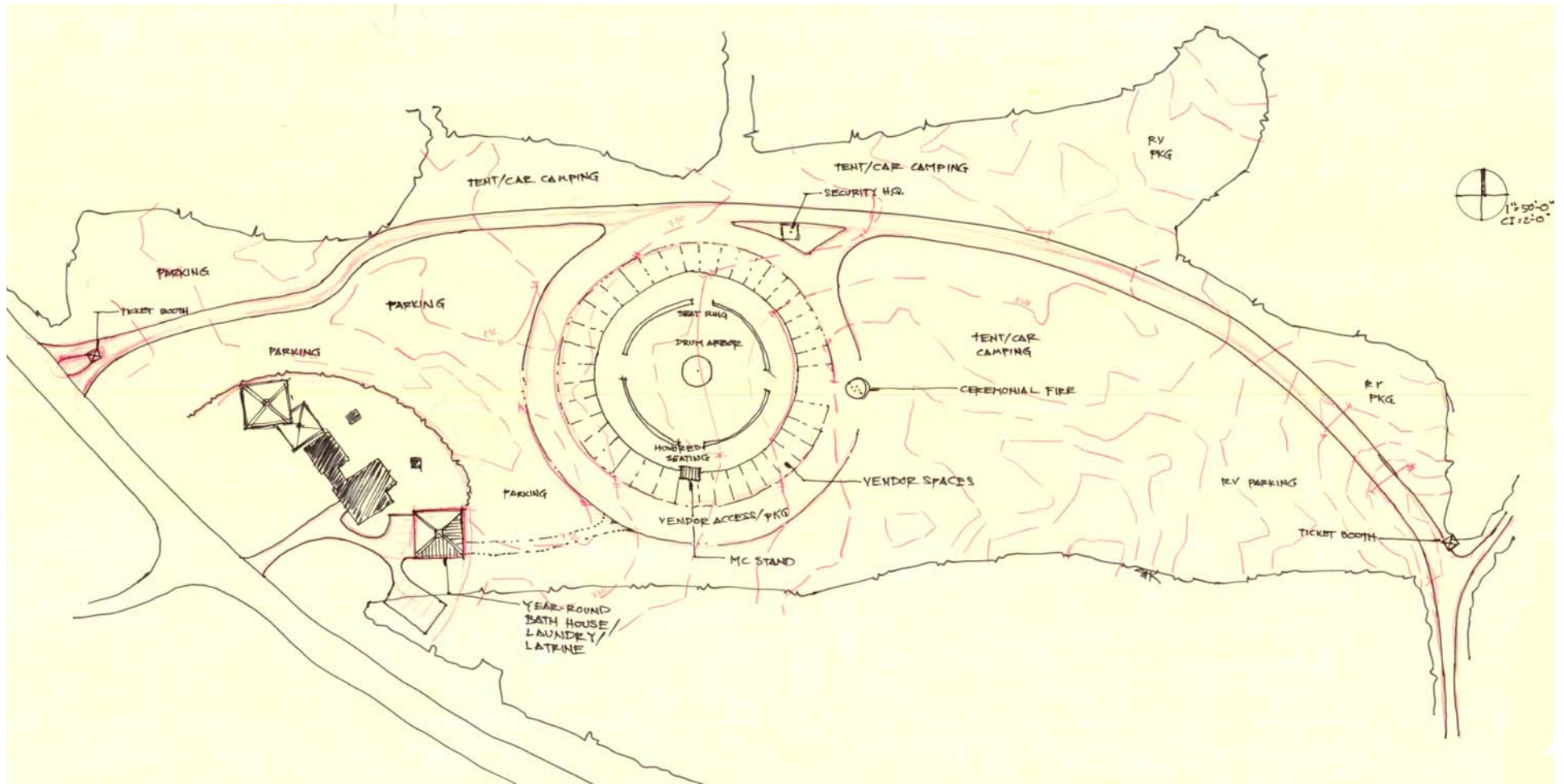
June 6th & 7th 2005



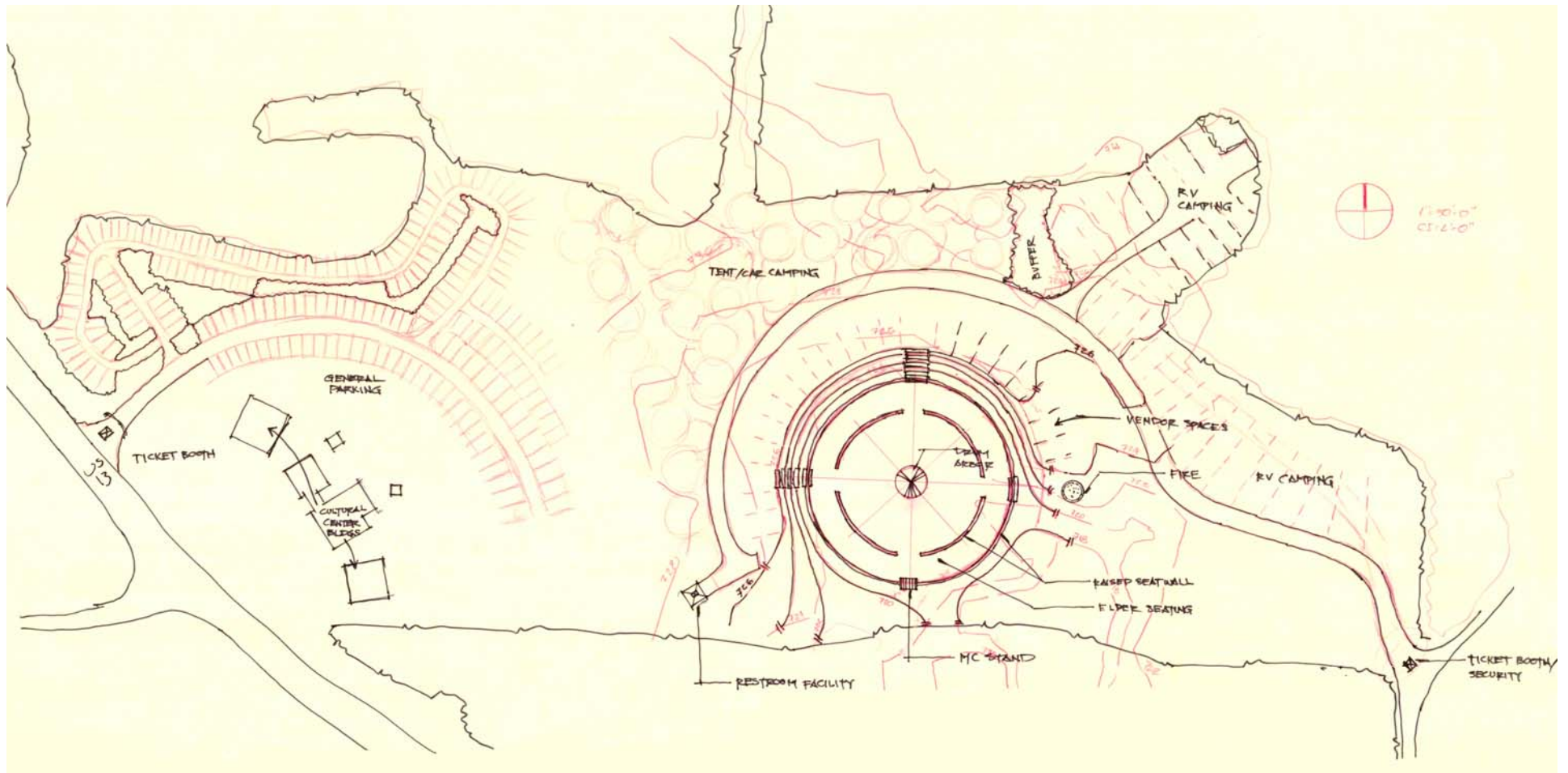
**Example of Careful Stormwater Management
for Parking Lots and Roads**



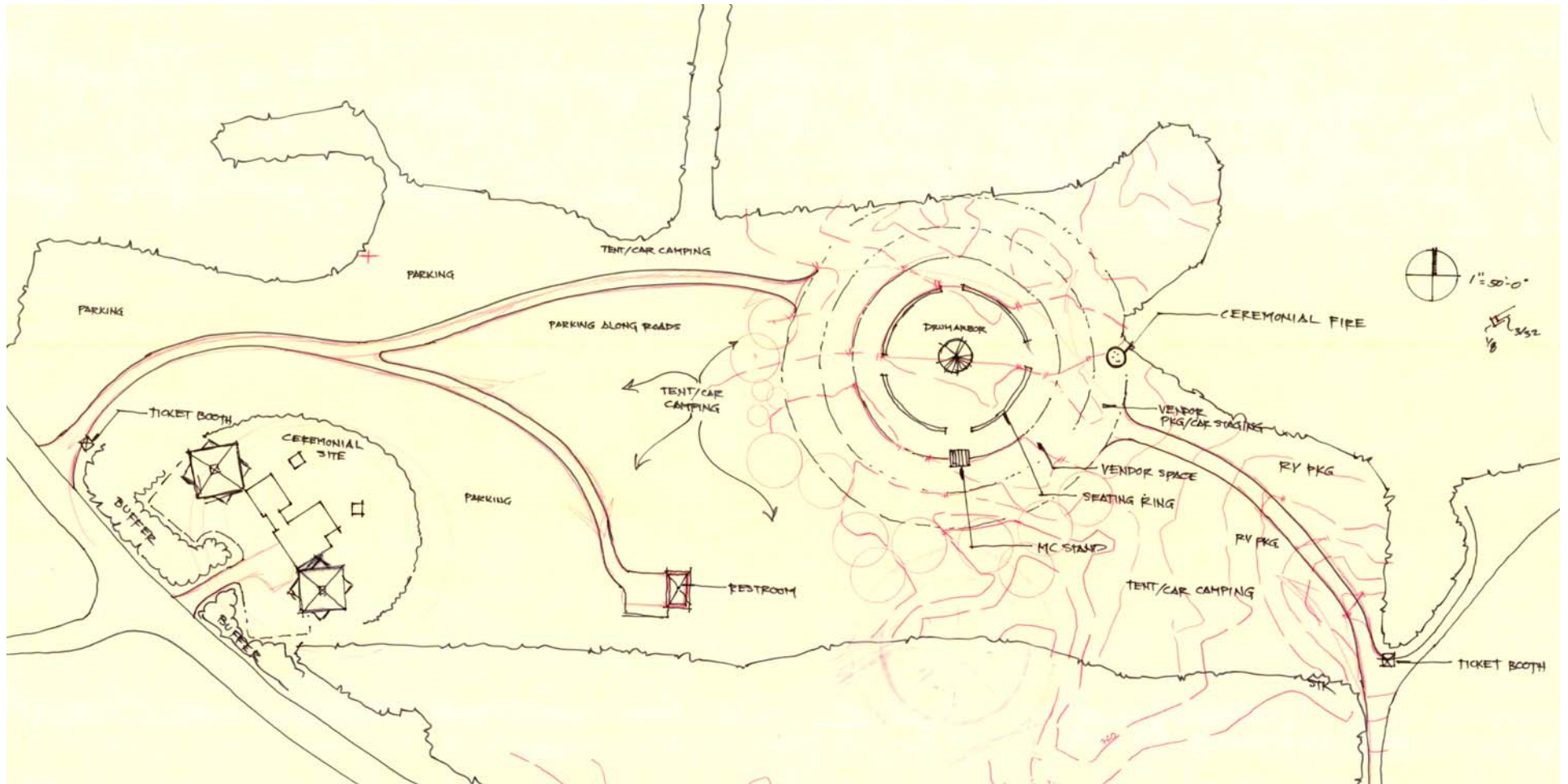
Workshop Notes and Site Map Red Cliff Pow-Wow Grounds Project



Pow-Wow Grounds Idea #1

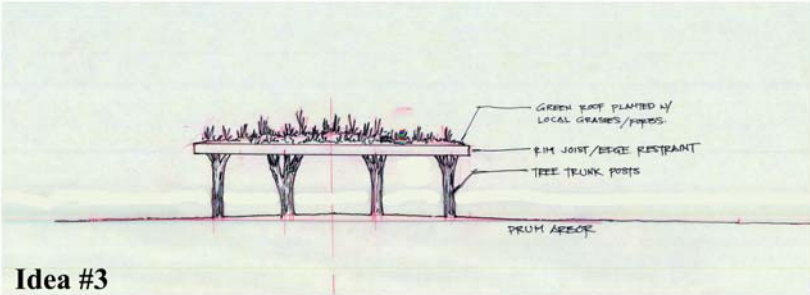
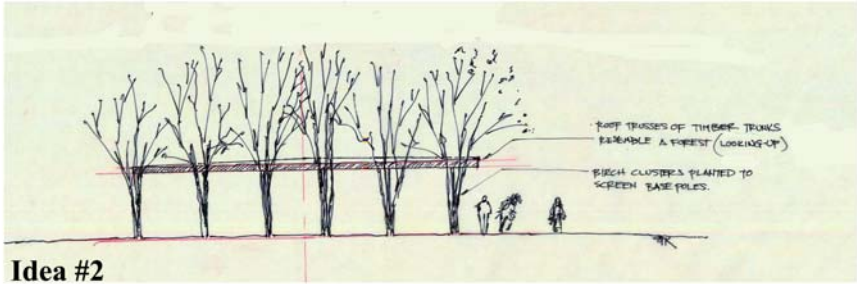
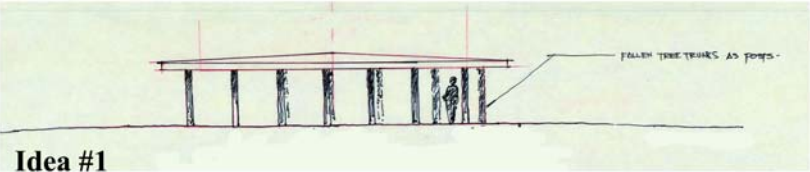


Pow-Wow Grounds Idea #2



Pow-Wow Grounds Idea #3

Three Ideas for a new Drum Arbor for the Red Cliff Pow-Wow Grounds



This poster shows some preliminary results of an ongoing collaboration between the Red Cliff Community and the Department of Landscape Architecture at the UW-Madison. These ideas were generated during a two-day "Open Workshop on June 6th and 7th 2005. The faculty and students thank everyone who participated for your kindness and hospitality!

- Elderly seating/comfort
(best seats under outside arbor, designated handicapped entrance to grounds, etc)
- Map showing exact location of proposed new pavilion grounds
- Kitchen for feast - maybe a facility that is large enough for fitness + other activities (activity center) winter pavilion?
- Permanent structure for feast 30' x 15' (Bad River)
- provide access to small
- Pav. area located in the center
→ location is important, not just out in front of building
→ accessible to everyone
→ close to the restrooms
→ provide a place to sit and eat (this is the main reason for the pavilion)
- Provide access to the
restrooms
- Provide a place to sit and eat

FEEDBACK BOARD
ALL COMMENTS WELCOME!
Thank You

This report was respectfully submitted to the Red Cliff Community August 2005.

Lead Designer: Shawn T. Kelly, ASLA, Kelly Design Group, Williams Bay WI

Architectural Consultant: Lou Host-Jablonski AIA, Design Coalition, Madison WI

Project Organizers:
 Catherine Joy, Design Coalition Madison WI;
 Susan Thering, Ph.D. Design Coalition Institute

Student Team:

Diane Finnegan
 Teresa Gillotti
 Joe Grover
 Denise Johnson
 Wade Johnson
 Katie Bresette
 Eric Long
 Heather Stewart
 Jake Vanderpuy
 Jaija Windler
 Ryan Ziegelbauer