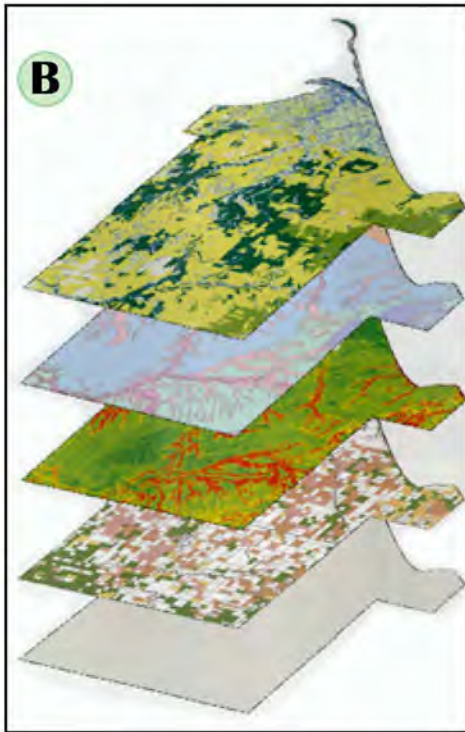


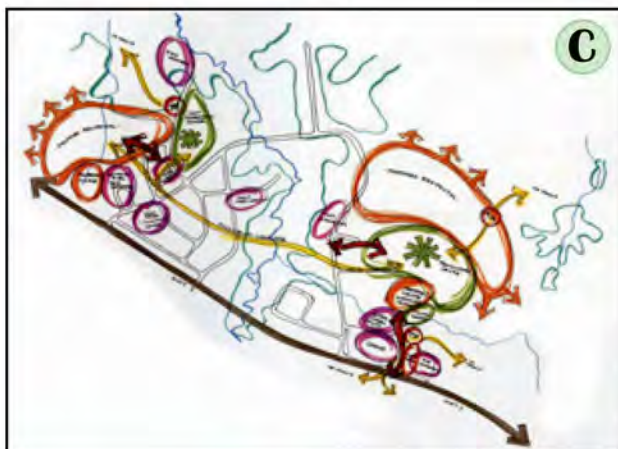
“Bad River Indian Reservation: A Study of Healthy Native American Communities in Odanah, WI”

by: **Kathy Lewis**

Lewis' Master Plan focuses on four areas for development: housing, tribal college campus, casino/main entrance, and a heritage center. Houses will have solar heating and will be oriented according to Ojibwe culture. An abandoned ball field will become a tribal college in the native Algonquian language. A heritage center will serve as the central “heartbeat” to the community.



(A) Site Plan
(B) Sustainability Analysis
(C) Relationship Diagram



After graduating, Lewis moved to Ashland, WI for Americorp where she partnered with the Bad River Indian Reservation. After completing her year of service, she returned home to the Twin Cities. She is currently building her design and installation skills working at Knecht's Nursery in Northfield, MN. Lewis also works with adults with disabilities at Lifeworks. She is thankful for her education at Madison, allowing her the freedom to work at a variety of scales of design. Lewis is kept busy preparing to be married this fall!

